

# Büro Ole Scheeren

PRESS RELEASE 21.08.2025

## BÜRO OLE SCHEEREN REVEALS DESIGN FOR HOUHAI HYBRID CAMPUS IN SHENZHEN

**Büro Ole Scheeren has unveiled the design for the new Houhai Hybrid Campus in Shenzhen, China – a visionary development that integrates work, living, culture, commerce, leisure, recreation and nature into a unified urban ecosystem.**



Located in the Houhai district, a strategic area within the original Shenzhen Special Economic Zone (SEZ), the campus bridges the city's commercial centre and the scenic Shenzhen Bay waterfront. Houhai has become a focal point of Shenzhen's urban evolution, known for its culture-led planning and human scale urbanism. Ole Scheeren's design for the Houhai Hybrid Campus is a key component of the city's ambition to merge urbanity with nature and redefine the quality of city life.

The unveiling of the Hybrid Campus commemorates the 45th anniversary of Shenzhen's designation as a Special Economic Zone (SEZ) – a milestone that marks the city's meteoric rise from a fishing village to a global innovation hub. Over the past four decades, Shenzhen has become a symbol of China's economic progress and urban experimentation, with Houhai emerging as a model for integrated, sustainable development.

The Hybrid Campus comprises four towers distributed across four urban plots, spanning over 1.4 million square feet. The towers feature curvilinear forms that soften their scale and create a dynamic silhouette within Shenzhen's skyline, while staggered interlocking volumes present a playful architectural rhythm.



# Büro Ole Scheeren



The towers are connected by a three-dimensional promenade of elevated bridges, forming a ring that frames a central oasis. The architectural concept of the oasis introduces a layered circulation system, with a ground level and three elevated levels, offering a continuous park experience that blends nature and leisure. The connective band links the towers and integrates with Shenzhen's multi-level pedestrian networks, creating a fluid, human-scale environment that is both bicycle- and pedestrian-friendly.

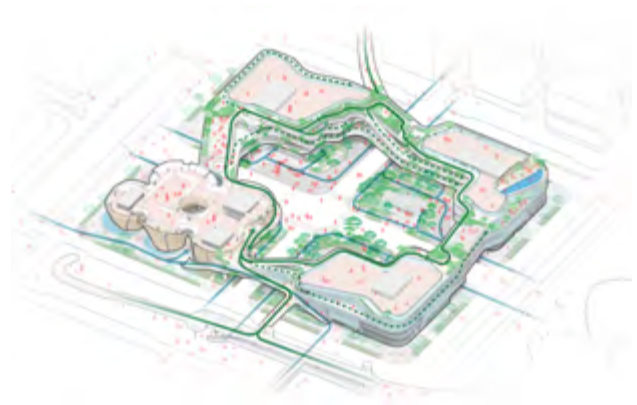
The Hybrid Campus is designed for 24-hour use by a multigenerational community, with each tower serving a distinct function – from flexible office spaces and co-living apartments to hotel rooms for short-term stays and serviced suites for long-term stays. A cultural venue anchors the campus, while the network of elevated walkways acts as a social connector, enabling seamless movement between the towers and their functions. Roof terraces and outdoor gathering spaces offer panoramic views of the city as well as the South China Sea and provide moments of respite, reinforcing the connection between people, nature, and the urban fabric.

Ecological designs are employed throughout the campus. Shaded walkways and natural ventilation, created through strategically carved massing, are complemented by fountains and reflective pools which not only regulate temperature but also enhance the sensory experience of the central oasis. The soft landscape incorporates a diverse tapestry of local species – including evergreens, flowering plants and trees – that respond to Shenzhen's seasonal changes and contribute to biodiversity and human comfort.



# Büro Ole Scheeren

The campus is directly connected to the Shenzhen Metro system with integrated metro exits and retail-lined basement access that promote sustainable urban mobility. The landscape design draws in the surrounding green spine and adjacent Shenzhen Talent Park, using fluid lines, natural stone paving and lush planting to create a harmonious environment.



Ole Scheeren commented, *"The Houhai Hybrid Campus manifests our long-standing engagement with the city of Shenzhen and our commitment to elevating the quality of life for its people. It is a place where architecture and nature converge to form a human-centric environment, completing the experience of a new urban ecosystem that reflects the diversity of city living and brings to life spaces for innovation, collaboration, and community."*



The Houhai Hybrid Campus creates new connections between city and nature, technology and culture, and transit and commerce. Currently under construction, it is set to be a landmark of architectural and cultural significance upon its scheduled opening in late 2026.

END

For high resolution images please contact:

**Büro Ole Scheeren**  
Public Relations  
pr@buro-os.com  
+49 30 3464 9283 0 (Berlin)  
+86 10 5900 1983 (Beijing)

[www.buro-os.com](http://www.buro-os.com)

Instagram: @buroolescheeren  
LinkedIn: Büro Ole Scheeren  
WeChat: BüroOleScheeren

# Büro Ole Scheeren

## Media Contacts

For further information and interviews, please contact ING Media

Haziq Ariffin | [haziq.ariffin@ing-media.com](mailto:haziq.ariffin@ing-media.com) | +65 8300 6964

Lucy Boyd | [lucy.boyd@ing-media.com](mailto:lucy.boyd@ing-media.com) | +44 (0) 7851 920611

## Notes to Editors

### About Büro Ole Scheeren

Büro Ole Scheeren is an international architectural firm that practices architecture, urban design, interior design and research. With offices in Hong Kong, Beijing, London and Berlin, Büro Ole Scheeren designs and realizes pioneering building projects and urban developments worldwide. To date, Ole Scheeren has completed projects totalling more than one million square meters, with another million currently under construction and a further million under design. The buildings have won numerous awards, including the CTBUH Award of Excellence for Tencent Helix and The Axiom in 2025 and Fifteen Fifteen by Ole Scheeren in 2023, the CTBUH 10 Years Award for the Interlace in Singapore in 2023, the CTBUH Urban Habitat Award for DUO in Singapore in 2021, the World Building of the Year Award 2015 for The Interlace in Singapore, and the CTBUH Best Tall Building Worldwide Award 2013 for the CCTV Headquarters in Beijing.

Büro Ole Scheeren

Public Relations [pr@buro-os.com](mailto:pr@buro-os.com)

+49 30 3464 9283 0 (Berlin)

+86 10 5900 1983 (Beijing)

For high resolution images please contact:

**Büro Ole Scheeren**  
Public Relations  
[pr@buro-os.com](mailto:pr@buro-os.com)  
+49 30 3464 9283 0 (Berlin)  
+86 10 5900 1983 (Beijing)

**[www.buro-os.com](http://www.buro-os.com)**

Instagram: [@buroolescheeren](https://www.instagram.com/buroolescheeren)  
LinkedIn: Büro Ole Scheeren  
WeChat: BüroOleScheeren